



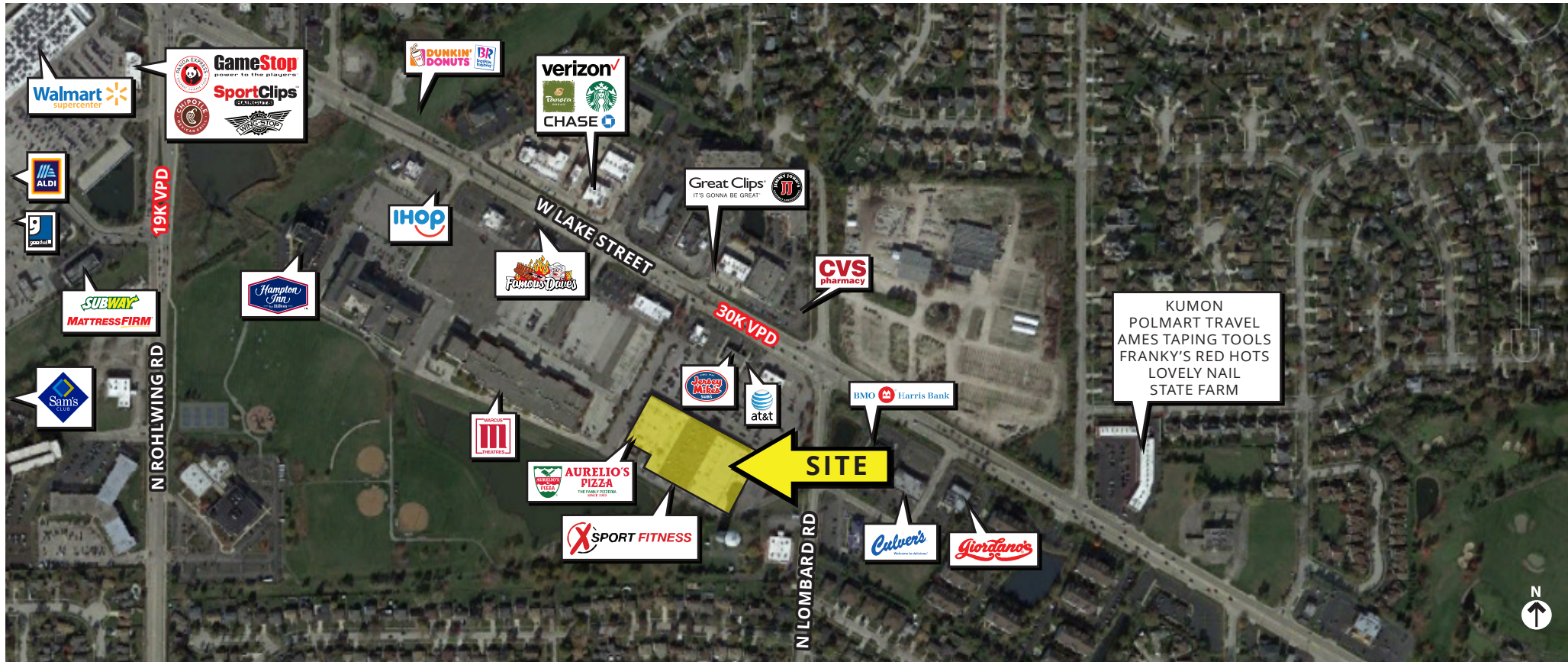
**846 SF - 6,000 SF AVAILABLE FOR LEASE (DIVISIBLE)**

## **CENTENNIAL PLAZA**

1401-1455 W LAKE ST, ADDISON, IL  
**FOR LEASE**



**CONTACT: HANNAH PERL** [hperl@metrocre.com](mailto:hperl@metrocre.com) 847.849.1026



## PROPERTY HIGHLIGHTS

- 846 SF - 6,000 SF Available
- Anchored by Xsport and BioLife
- Located near the Entrance to I-355 and I-290
- Area Co-Tenants Include Walmart, Sam's Club and Aldi

## AREA TENANTS INCLUDE



## DEMOGRAPHICS

	1 MILE	3 MILES	5 MILES
TOTAL POPULATION	11,404	79,095	254,971
DAYTIME POPULATION	12,448	91,242	273,432
HOUSEHOLDS	4,275	28,868	94,063
AVG HH INCOME	\$113,069	\$104,273	\$110,142

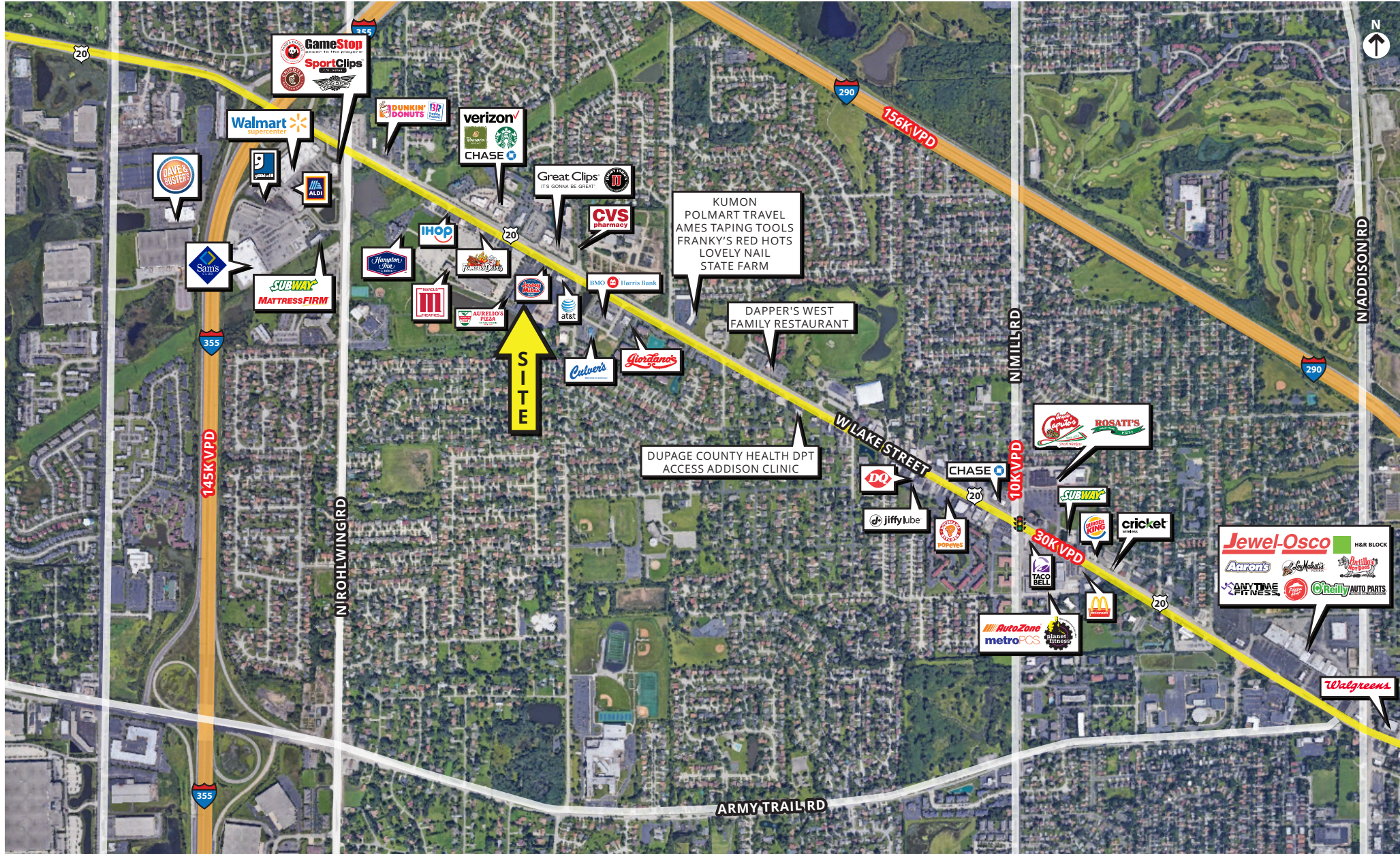
## TRAFFIC COUNTS

W LAKE ST	30,306 VPD
N ROHWLING	19,535 VPD
N LOMBARD	4,413 VPD

# CENTENNIAL PLAZA

1401-1445 W LAKE ST, ADDISON, IL

FOR LEASE



CONTACT  
INFORMATION:

**HANNAH PERL**  
hperl@metrocre.com  
847.849.1026

56 Skokie Valley Road  
Highland Park, Illinois 60035  
www.MetroCRE.com

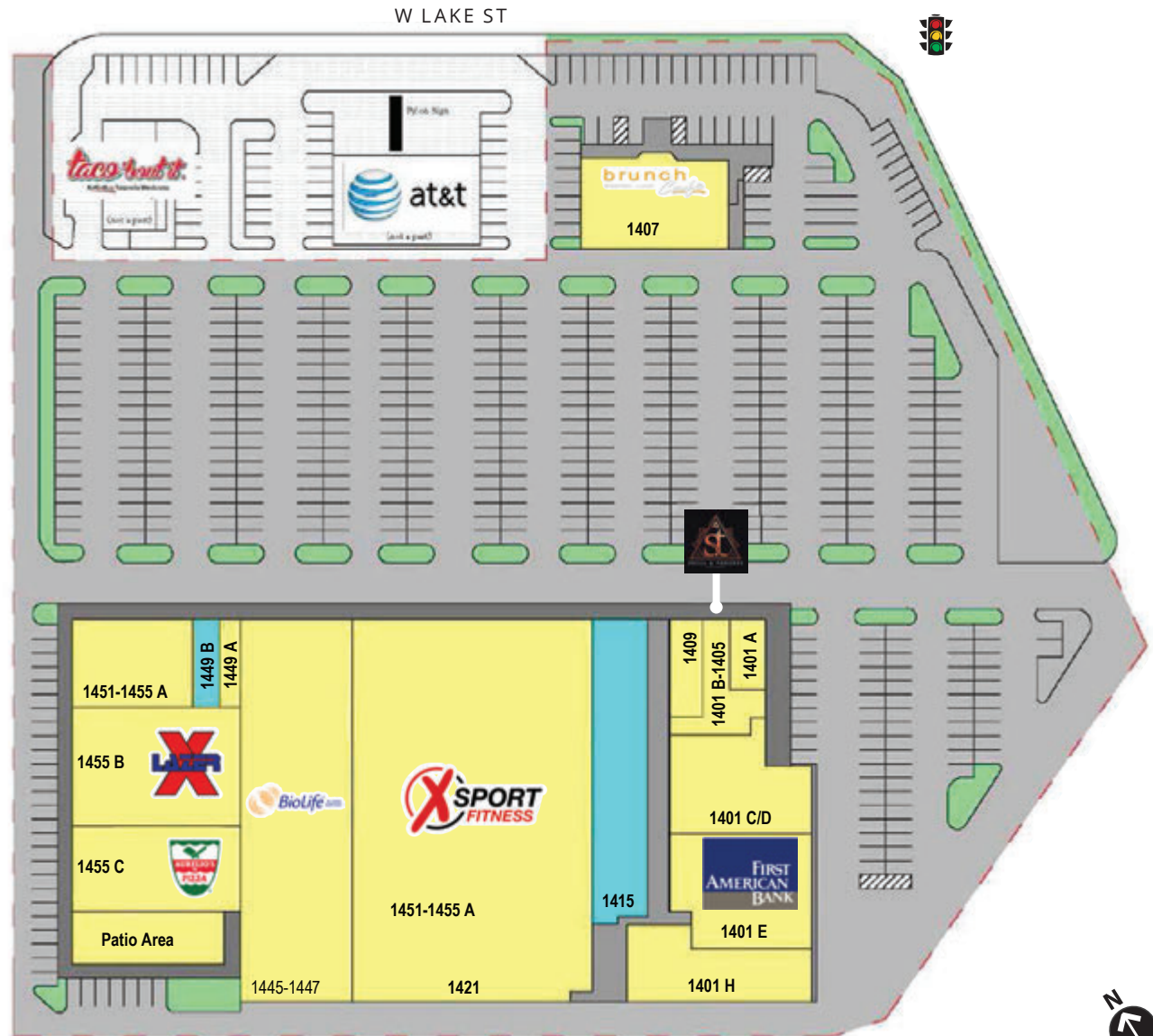
**METRO**  
COMMERCIAL REAL ESTATE

# CENTENNIAL PLAZA

1401-1445 W LAKE ST, ADDISON, IL

FOR LEASE

#	TENANT	SF
1401A	Centennial Cleaners	1,000
1401B-1405	Skull & Thrones Hair Society	1,978
1401C-D	Dance Xplosion	6,099
1401E	First American Bank	5,287
1401H	Sudsational Car Wash	6,768
1409	Esha Dental	1,500
1415-1415B	AVAILABLE (Divisible)	6,000
1421	XsportFitness	39,339
1445-1447	BioLife Plasma Services	16,515
1449B	AVAILABLE	846
1449A	Couture Salon Spa	1,200
1451-1455A	Briki Cafe	4,778
1455B	Lazer-X	9,120
1455C	Aurelio's Pizza & Pasta	5,280
1407	Brunch Café	5,756



CONTACT  
INFORMATION:

**HANNAH PERL**  
hperl@metrocre.com  
847.849.1026

56 Skokie Valley Road  
Highland Park, Illinois 60035  
www.MetroCRE.com



**METRO**  
COMMERCIAL REAL ESTATE