



6,062 SF INLINE (DIVISIBLE) AVAILABLE

8810 GROSS POINT RD, SKOKIE
FOR LEASE



CONTACT: JONATHAN HYMAN jhyman@metrocre.com 224.365.8144 // **HANNAH PERL** hperl@metrocre.com 847.849.1026

PROPERTY HIGHLIGHTS

- Right off the I-94 Full Interchange (150,000 VPD)
- Multiple Access Points along Dempster and Gross Point Rd.
- Prominent visibility from Dempster & Gross Point Rd (56K VPD combined)
- Large Pylon Signage with Strong Visibility from Dempster
- Highly Dense Trade Market

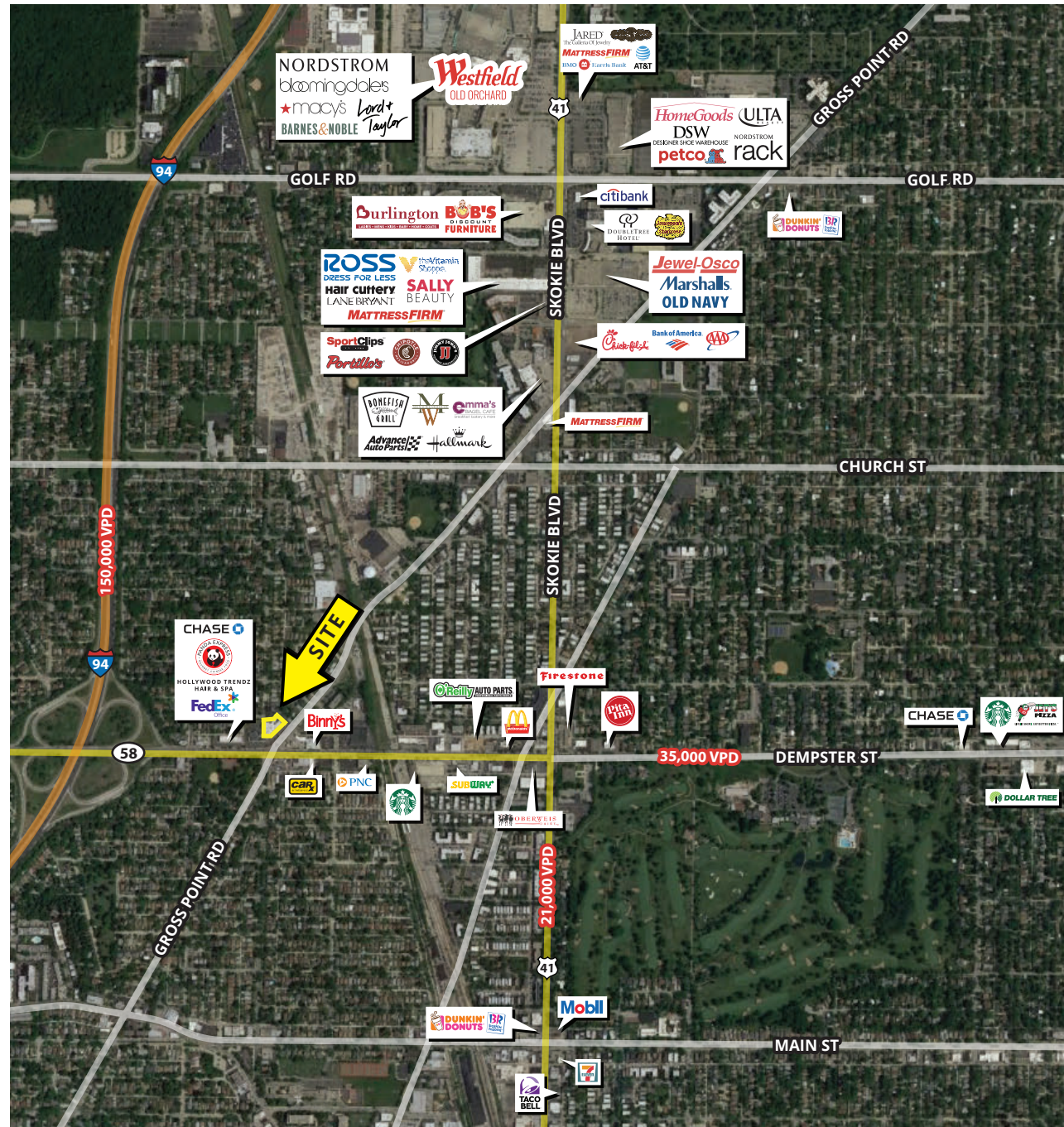
DEMOGRAPHICS

| | 1 MILE | 3 MILES | 5 MILES |
|--------------------|----------|-----------|-----------|
| TOTAL POPULATION | 27,590 | 147,792 | 505,185 |
| DAYTIME POPULATION | 17,846 | 127,135 | 369,094 |
| HOUSEHOLDS | 10,446 | 53,411 | 192,646 |
| AVG HH INCOME | \$93,960 | \$137,173 | \$138,551 |

TRAFFIC COUNTS

| | |
|-------------|------------|
| DEMPSTER ST | 35,000 VPD |
| SKOKIE BLVD | 21,000 VPD |

AREA RETAILERS INCLUDE



CONTACT INFORMATION:

JONATHAN HYMAN
 jhyman@metrocre.com
 224.365.8144

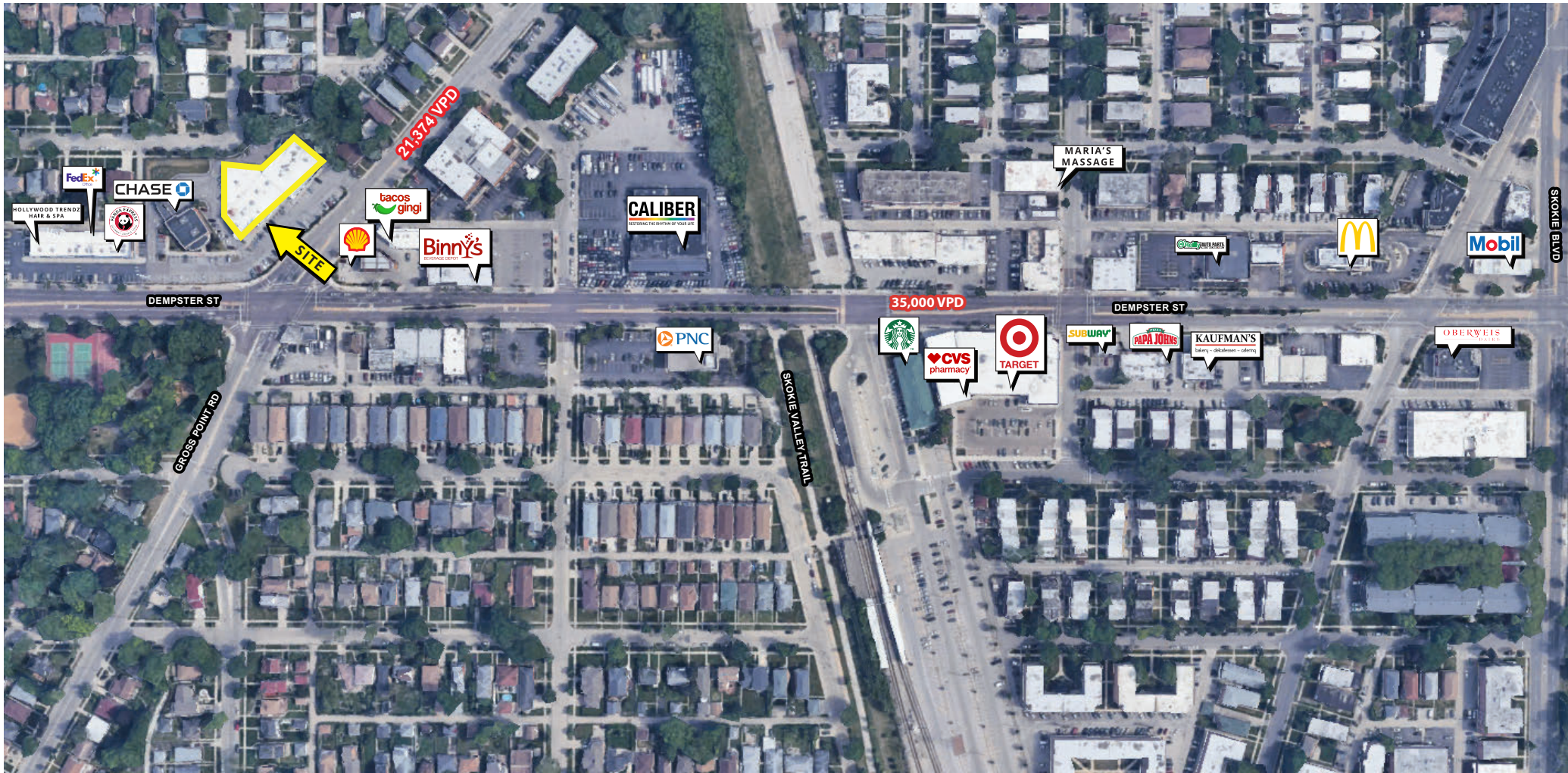
HANNAH PERL
 hperl@metrocre.com
 847.849.1026

56 Skokie Valley Road
 Highland Park, Illinois 60035
 www.MetroCRE.com



6,062 SF INLINE (DIVISIBLE) AVAILABLE 8810 GROSS POINT RD, SKOKIE

FOR LEASE



CONTACT
INFORMATION:

JONATHAN HYMAN
jhyman@metrocre.com
224.365.8144

HANNAH PERL
hperl@metrocre.com
847.849.1026

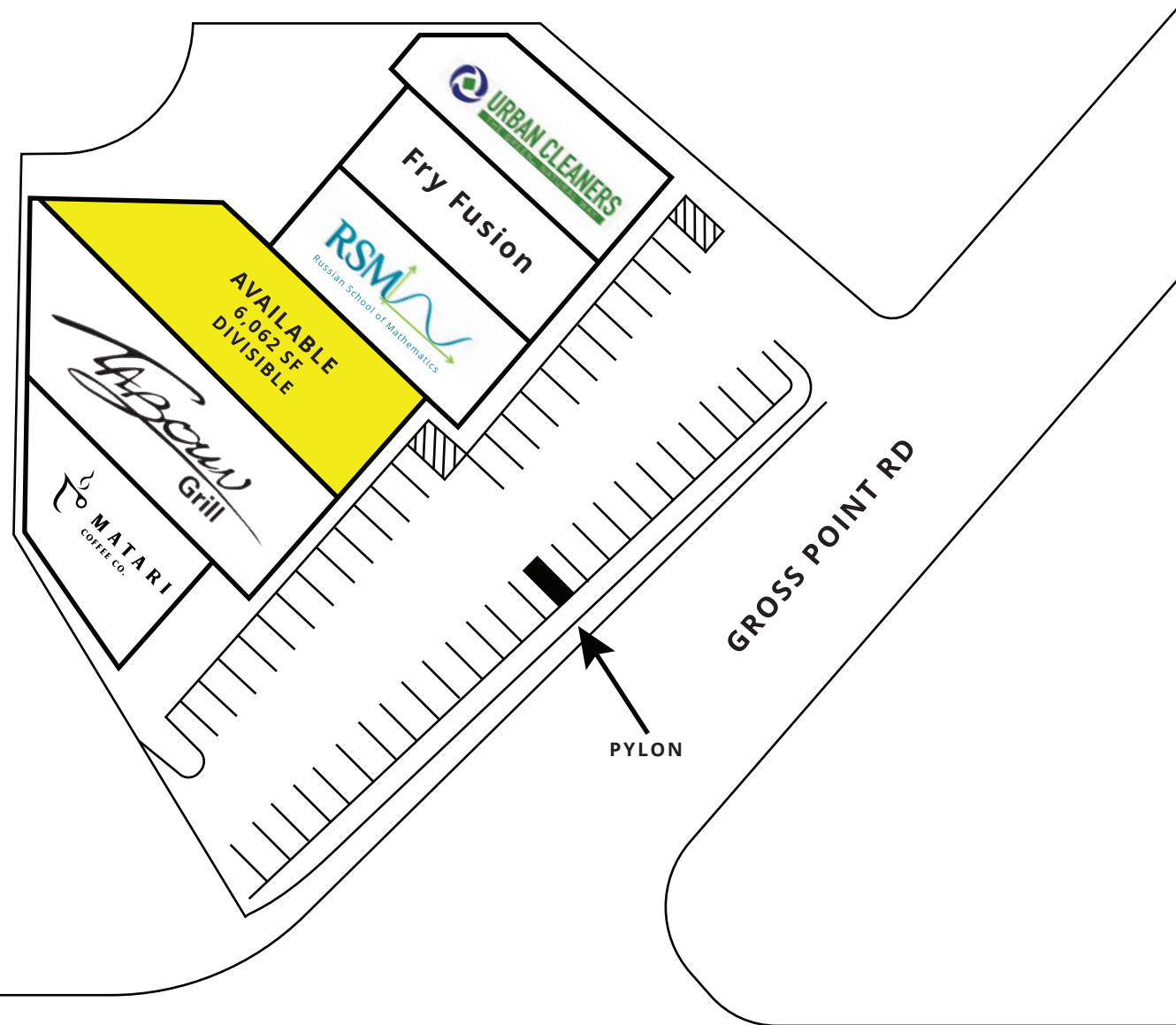
56 Skokie Valley Road
Highland Park, Illinois 60035
www.MetroCRE.com

METRO
COMMERCIAL REAL ESTATE

6,062 SF INLINE (DIVISIBLE) AVAILABLE

8810 GROSS POINT RD, SKOKIE

FOR LEASE



DEMPSTER STREET

CONTACT
INFORMATION:

JONATHAN HYMAN
jhyman@metrocre.com
224.365.8144

HANNAH PERL
hperl@metrocre.com
847.849.1026

56 Skokie Valley Road
Highland Park, Illinois 60035
www.MetroCRE.com



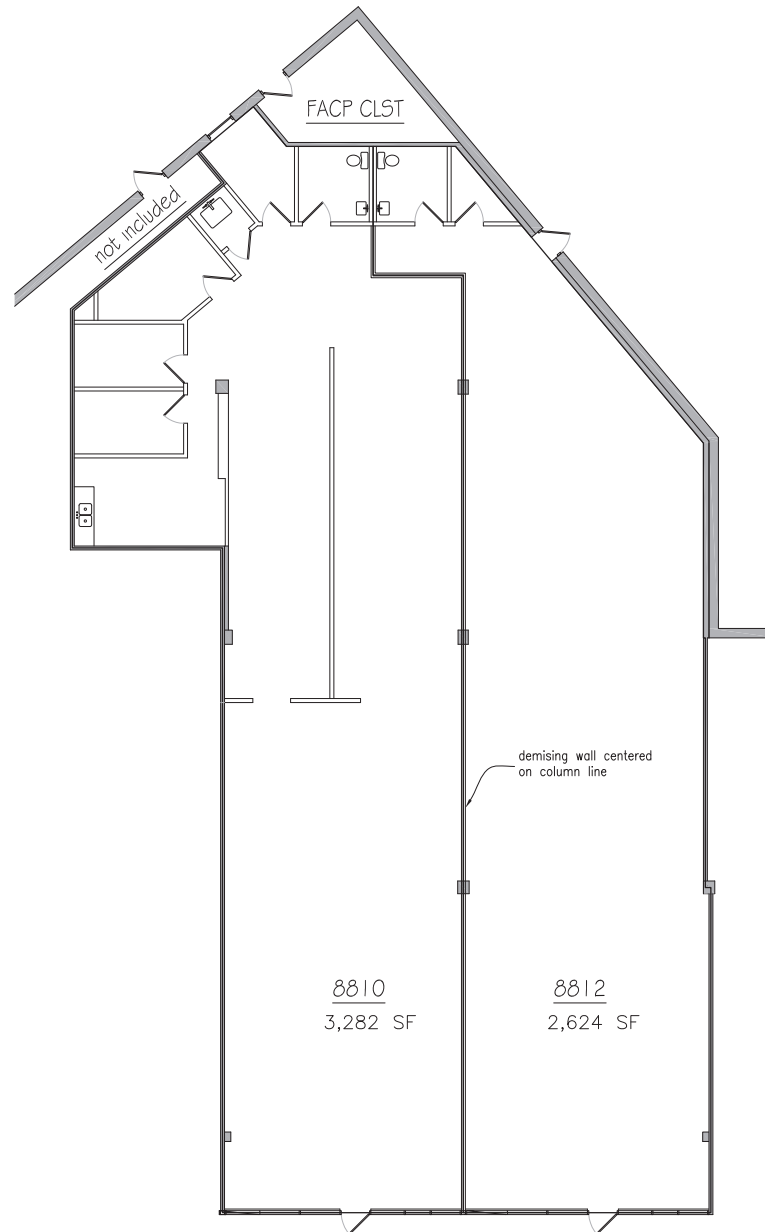
METRO
COMMERCIAL REAL ESTATE

6,062 SF INLINE (DIVISIBLE) AVAILABLE

8810 GROSS POINT RD, SKOKIE

FOR LEASE

6,062 SF
SPACE DIVISIBLE



CONTACT
INFORMATION:

JONATHAN HYMAN
jhyman@metrocre.com
224.365.8144

HANNAH PERL
hperl@metrocre.com
847.849.1026

56 Skokie Valley Road
Highland Park, Illinois 60035
www.MetroCRE.com



METRO
COMMERCIAL REAL ESTATE