



1,869 SF RETAIL SPACE AVAILABLE

DOWNTOWN EVANSTON

809 CHURCH ST, EVANSTON

FOR LEASE



CONTACT: CHELSEA HENDERSON chenderson@metrocre.com 847.337.5287

PROPERTY HIGHLIGHTS

- 1,869 SF Former Cafe' Retail Space
- Situated just blocks from Northwestern University with nearly 23,000 students in attendance
- 1 block from the Davis Purple Line CTA stop which sees over 450,000 riders annually
- 1 block from the Davis Street/Evanston Metra stop which sees over 1,800 riders per day
- Ample street parking

DEMOGRAPHICS

	1 MILE	3 MILES	5 MILES
TOTAL POPULATION	34,387	171,314	414,873
DAYTIME POPULATION	32,911	101,196	258,282
HOUSEHOLDS	13,630	68,996	169,290
AVG HH INCOME	\$136,067	\$162,893	\$147,226

TRAFFIC COUNTS

SHERMAN AVE	2,733 VPD
CHURCH ST	2,957 VPD

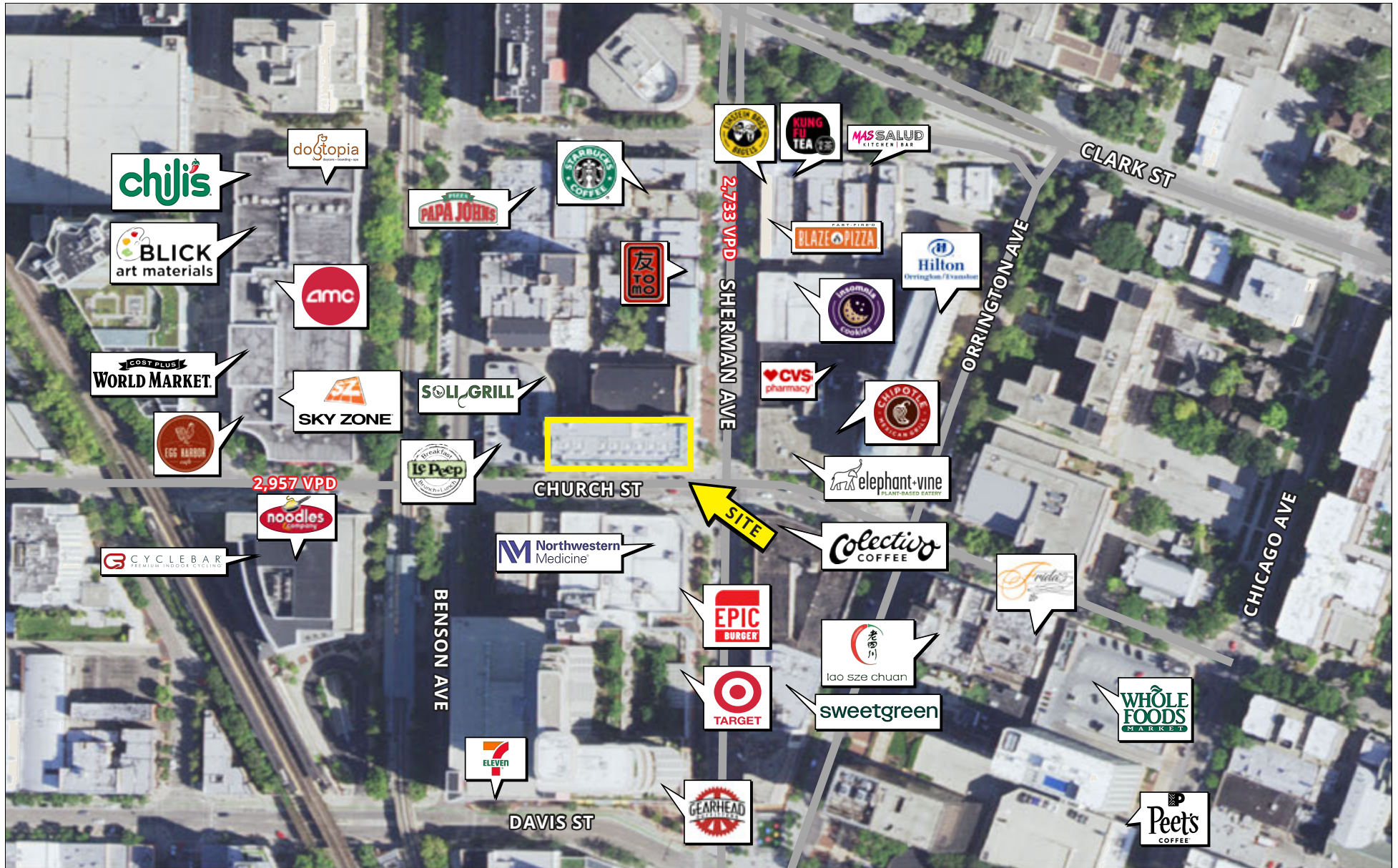
AREA TENANTS INCLUDE



DOWNTOWN EVANSTON

809 CHURCH ST, EVANSTON

FOR LEASE



CONTACT
INFORMATION:

CHELSEA HENDERSON
chenderson@metrocre.com
847.337.5287

56 Skokie Valley Road
Highland Park, Illinois 60035
www.MetroCRE.com

METRO
COMMERCIAL REAL ESTATE

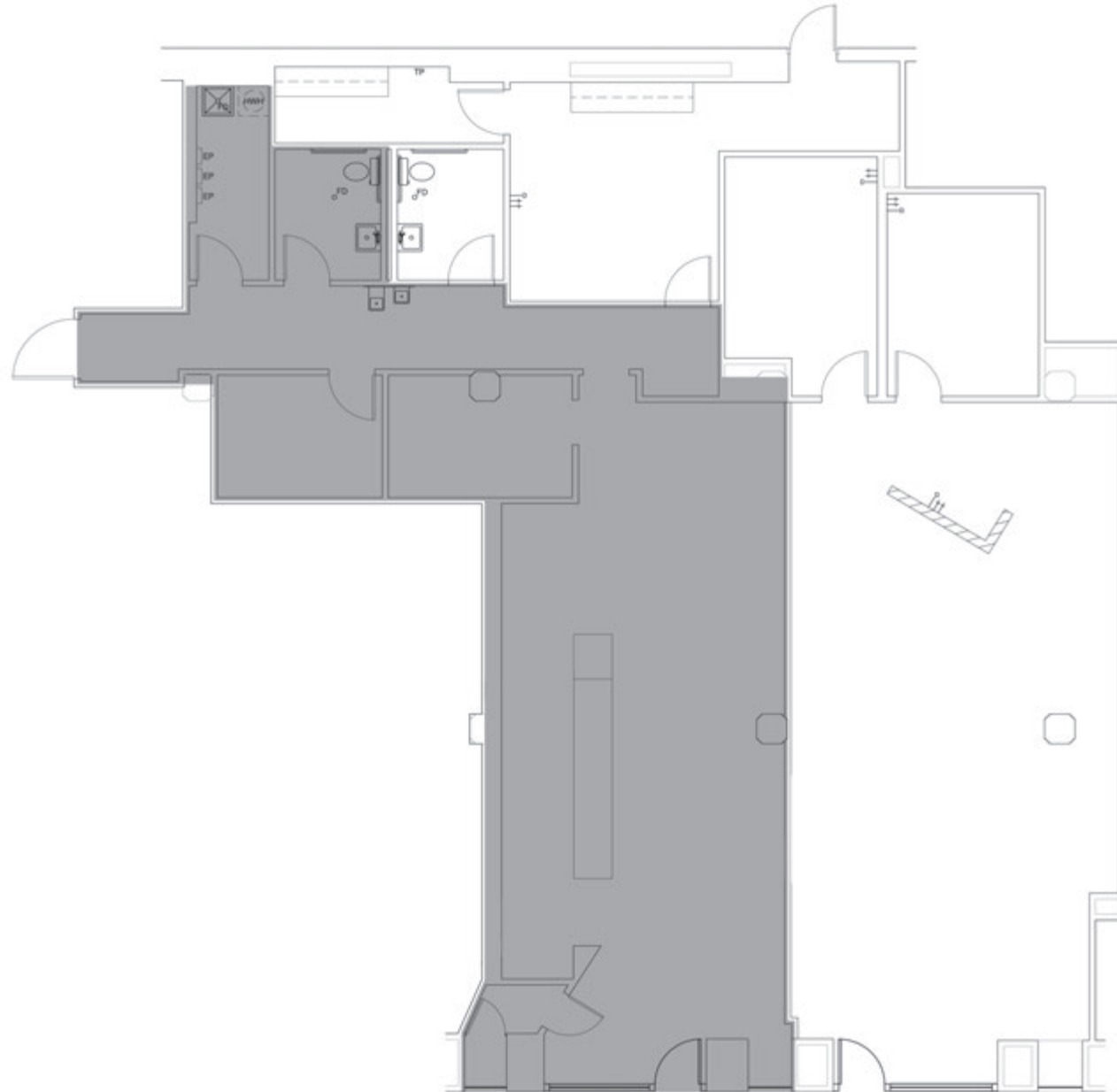
DOWNTOWN EVANSTON

809 CHURCH ST, EVANSTON

FOR LEASE



CLICK **HERE**
OR SCAN FOR
VIRTUAL TOUR
1,869 SF



FORMER CAFE' SPACE
GLA = 1,869 SF

CONTACT
INFORMATION:

CHELSEA HENDERSON
chenderson@metrocre.com
847.337.5287

56 Skokie Valley Road
Highland Park, Illinois 60035
www.MetroCRE.com



METRO
COMMERCIAL REAL ESTATE