

# Hyde Park

1553 E HYDE PARK BLVD,, CHICAGO, ILLINOIS

**METRO**  
COMMERCIAL REAL ESTATE

FOR LEASE // 675 SQUARE FEET



# Hyde Park

## PROPERTY HIGHLIGHTS

- Steps from Metra 51<sup>st</sup>/53<sup>rd</sup> (Hyde Park) stop
- Prime location fronting Hyde Park Blvd
- Located on the 6, 28, & 172 CTA bus lines

## DEMOGRAPHICS

	½ MILE	1 MILE	2 MILES
TOTAL POPULATION	18,415	42,434	96,344
DAYTIME POPULATION	10,969	28,910	48,375
HOUSEHOLDS	11,477	23,316	59,526
AVG HH INCOME	\$97,148	\$118,964	\$94,395

## TRAFFIC COUNTS

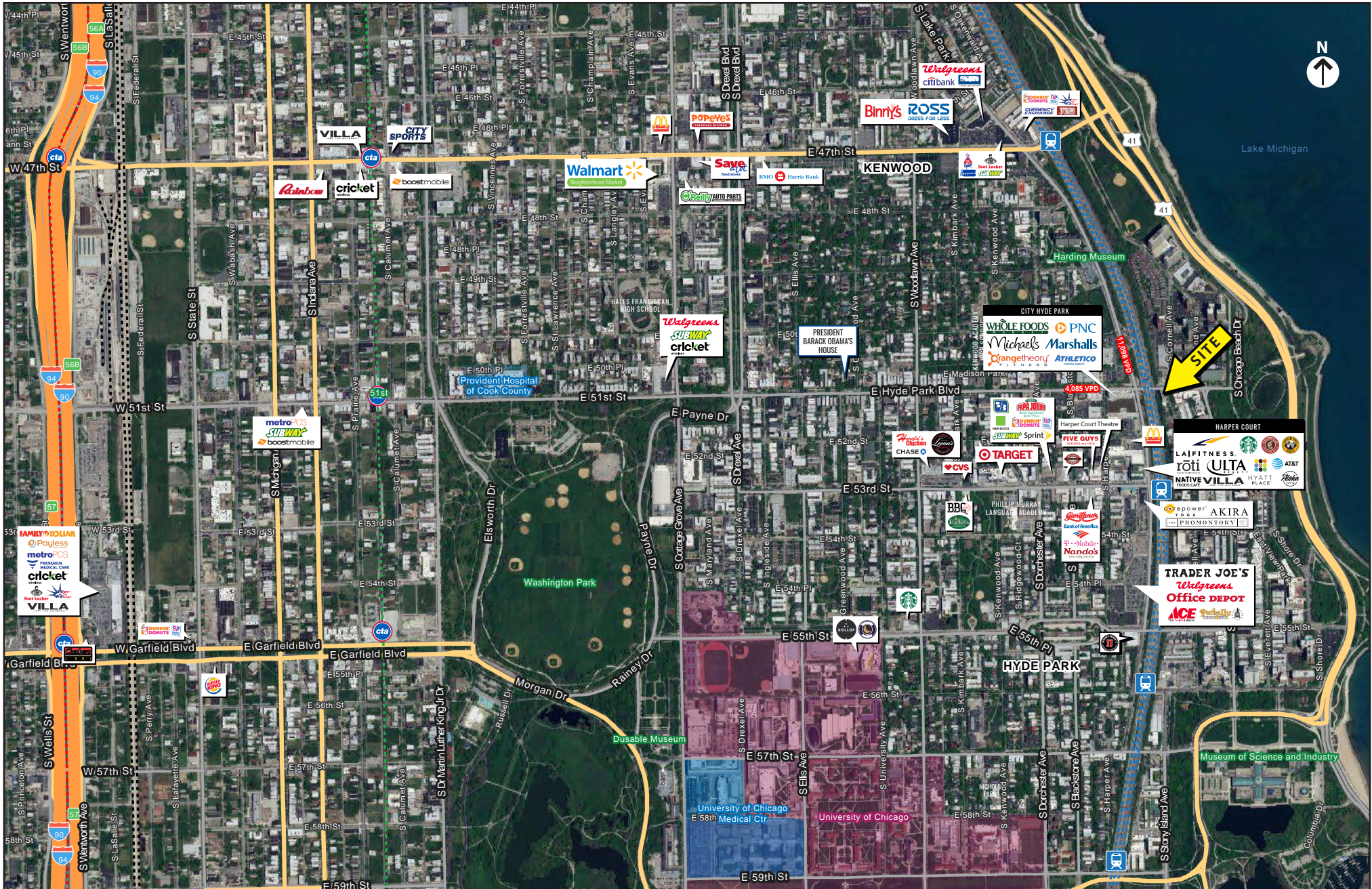
S LAKE PARK AVE	11,098 VPD
E HYDE PARK BLVD	4,085 VPD

## WALK SCORE®

WALK SCORE	<b>92</b>	walker's paradise > daily errands do not require a car
TRANSIT SCORE	<b>65</b>	good transit > many nearby public transportation options
BIKE SCORE	<b>94</b>	bikers paradise > daily errands can be accomplished on a bike



# Hyde Park





## Leasing Contacts

**CHELSEA HENDERSON**

CHENDERSON@METROCRE.COM

847.337.5287



[WWW.METROCRE.COM](http://WWW.METROCRE.COM)

© 2022 METRO COMMERCIAL REAL ESTATE. ALL RIGHTS RESERVED. ALL INFORMATION CONTAINED HEREIN IS FROM SOURCES DEEMED RELIABLE; HOWEVER, NO REPRESENTATION OR WARRANTY IS MADE TO THE ACCURACY THEREOF.