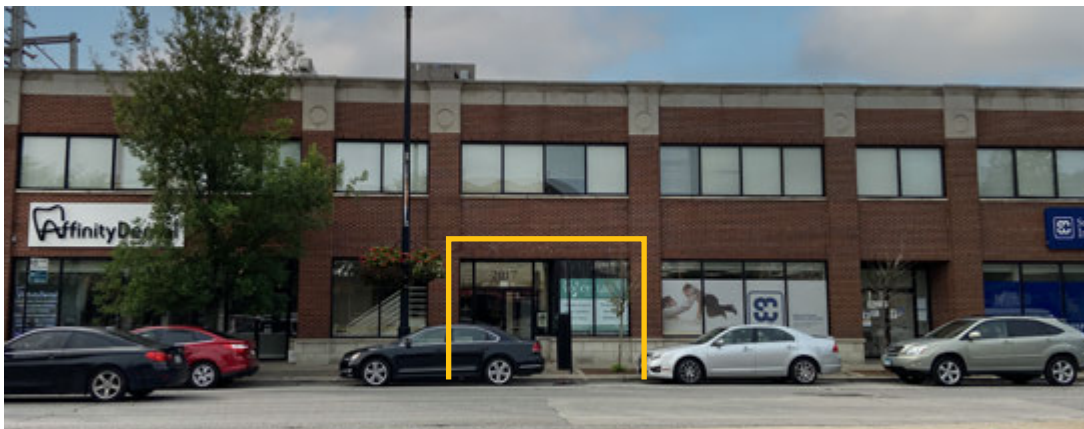
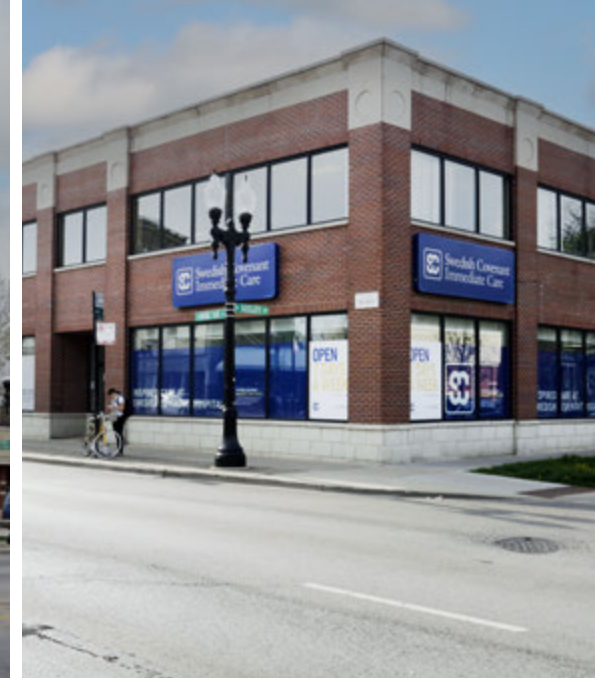
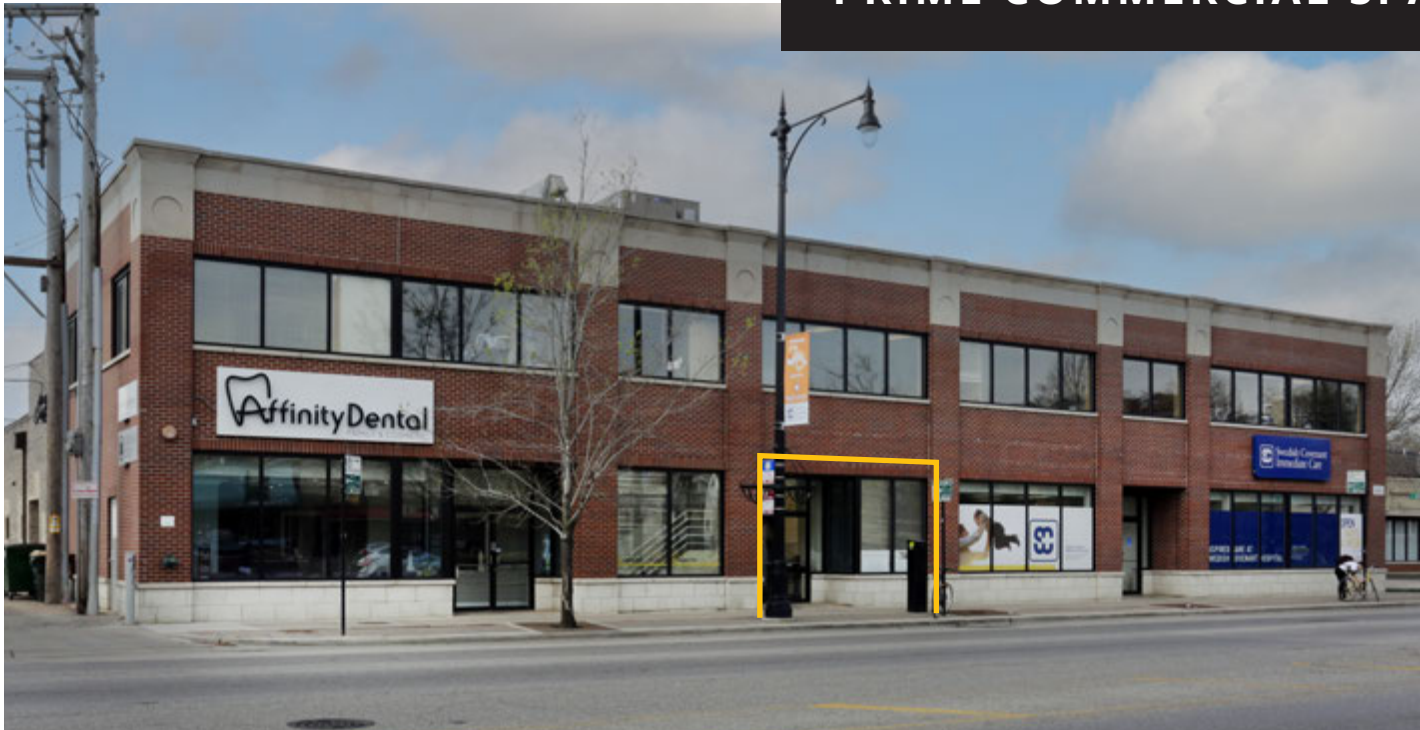


North Center Place

2015-2019 W IRVING PARK RD

METRO
COMMERCIAL REAL ESTATE

PRIME COMMERCIAL SPACE AVAILABLE: 600 SF



North Canter Place

PROPERTY HIGHLIGHTS

- High visibility free-standing building
- Easy access to CTA brown line, 2 blocks from Irving Park stop
 - » 21,378 Annual Riders at Irving Park
- 2 Miles to Lake Shore Drive or The Kennedy Expressway
- 600 SF ground retail

DEMOGRAPHICS

	½ MILE	1 MILE	2 MILES
TOTAL POPULATION	14,111	51,981	269,450
DAYTIME POPULATION	9,870	28,434	130,458
HOUSEHOLDS	7,090	27,381	138,805
AVG HH INCOME	\$230,179	\$209,564	\$156,268

TRAFFIC COUNTS

W IRVING PARK RD	27K VPD
N LINCOLN AVE	3K VPD

WALK SCORE®

WALK SCORE	96	walker's paradise > daily errands do not require a car
BIKE SCORE	94	biker's paradise > daily errands can be accomplished on a bike



2017-2019 W IRVING PARK RD, CHICAGO, ILLINOIS

North Center Place

