

# West Town

1140 W ERIE STREET, CHICAGO, ILLINOIS



FOR LEASE // 1,400 SQ FT NEW CONSTRUCTION AVAILABLE







## PROPERTY HIGHLIGHTS

- 1,400 SF New Construction Space
- In the Base of a 113-unit Residential Building
- On the busy Corner of Erie and Ogden
- Alderman Walter Burnett, Jr, Ward #27 (Zoning PD 1480)

## TRAFFIC COUNTS

OGDEN AVE	20,707 VPD
MAY STREET	4,851 VPD
I-90 / I-94	163,113 VPD

## DEMOGRAPHICS

	½ MILE	1 MILE	2 MILES
TOTAL POPULATION	12,899	63,871	288,604
DAYTIME POPULATION	12,836	107,131	680,337
HOUSEHOLDS	6,977	36,698	164,373
AVG HH INCOME	\$201,954	\$220,988	\$210,731

## WALK SCORE®

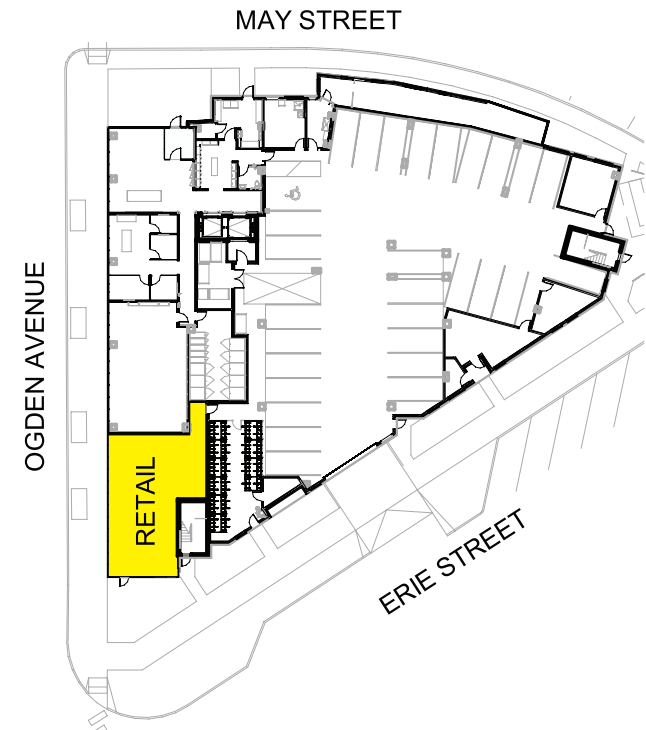
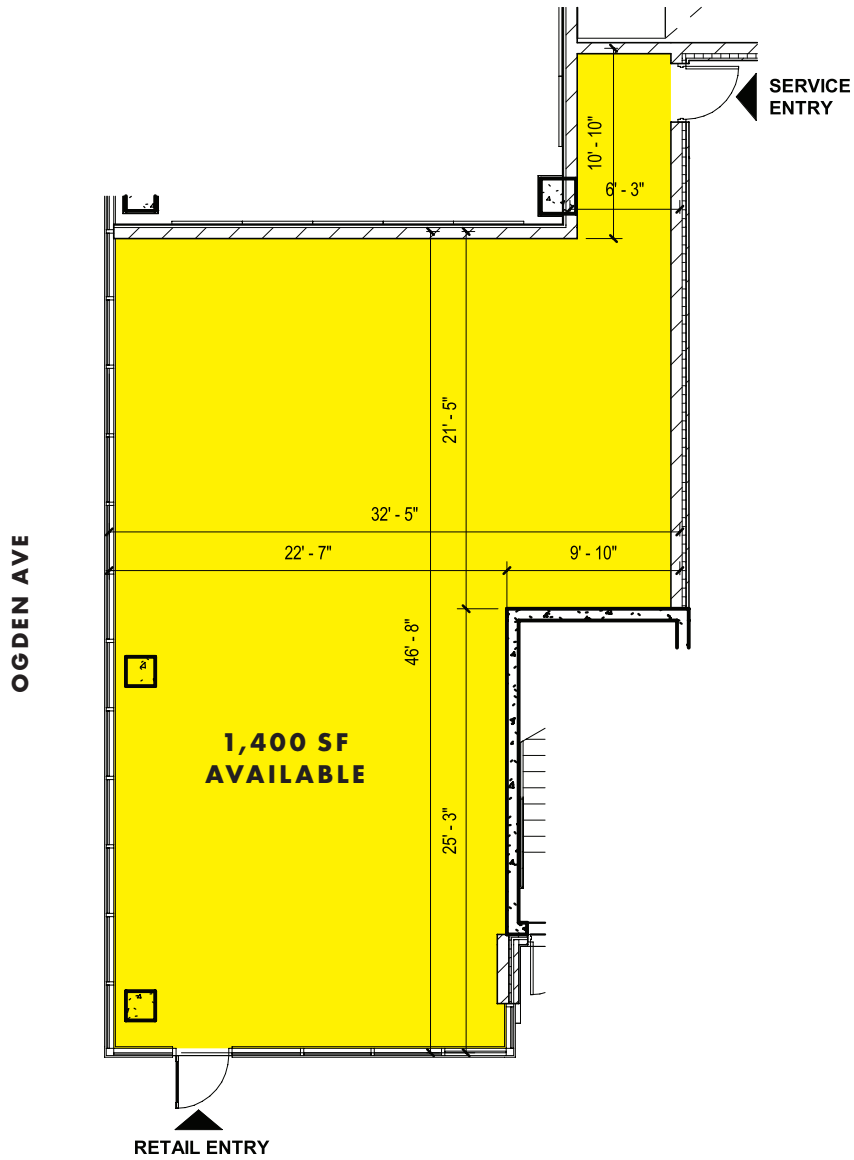
WALK SCORE	<b>95</b>	walker's paradise > daily errands do not require a car
TRANSIT SCORE	<b>77</b>	excellent transit > transit is convenient for most trips
BIKE SCORE	<b>97</b>	biker's paradise > daily errands can be accomplished on a bike





# West Town

1140 W ERIE STREET, CHICAGO, ILLINOIS



FOR MORE INFORMATION, CONTACT:

**HANNAH PERL**

hperl@metrocre.com 847.849.1026

1142 West Madison  
Suite 405  
Chicago, Illinois 60607

www.MetroCRE.com



**METRO**  
COMMERCIAL REAL ESTATE