

433 S Dearborn St.

METRO
COMMERCIAL REAL ESTATE

FOR LEASE // 1,284 SF AVAILABLE



433 S Dearborn St.

PROPERTY HIGHLIGHTS

- 1,284 SF space available
- Great visibility from busy Ida B Wells Dr (36K VPD)
- Nearby tenants include:
Poke Burrito, Taco Bell Cantina, Gino's East, Meli Cafe

DEMOGRAPHICS

	½ MILE	1 MILE	2 MILES
TOTAL POPULATION	22,047	73,858	235,738
DAYTIME POPULATION	116,998	418,187	657,133
HOUSEHOLDS	12,255	44,806	138,910
AVG HH INCOME	\$153,150	\$177,299	\$176,218

TRAFFIC COUNTS

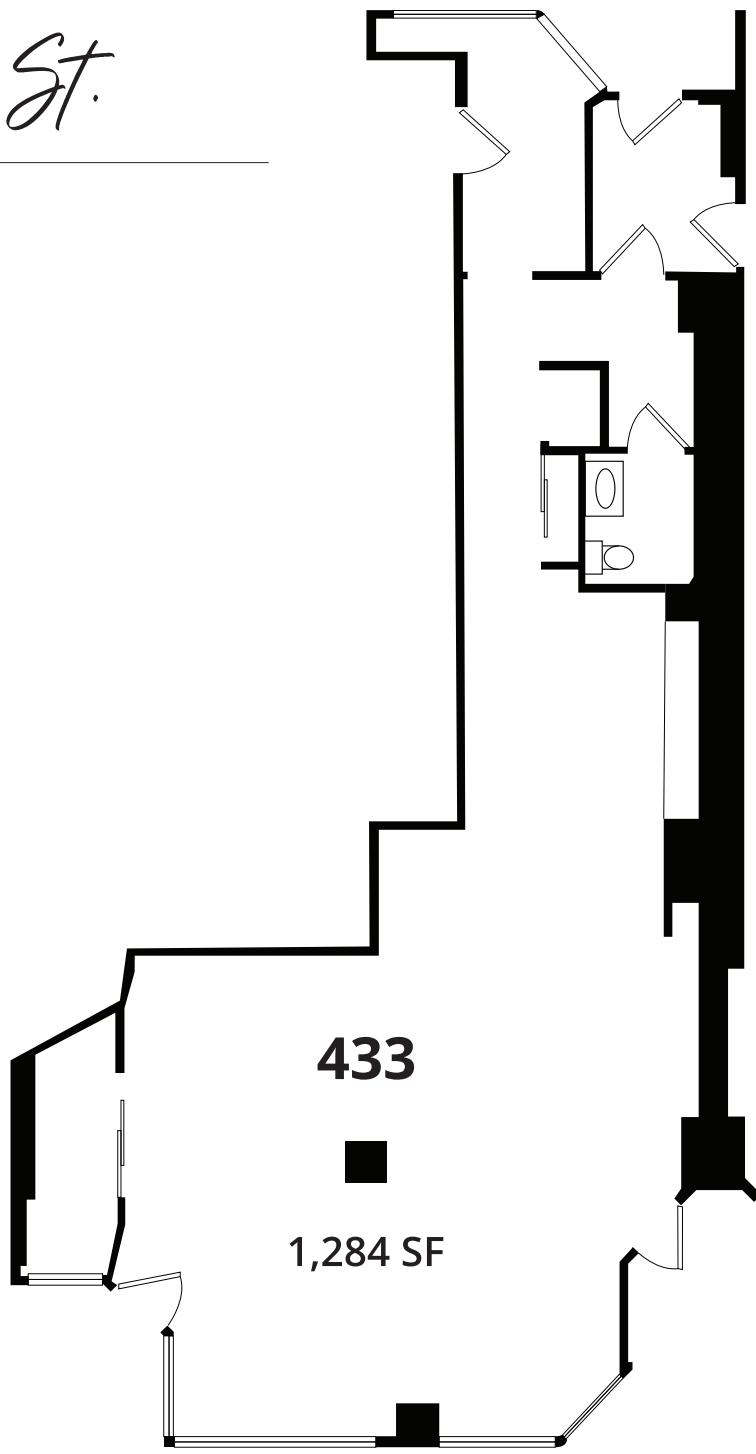
DEARBORN ST	11K VPD
IDA B WELLS DR	36K VPD

WALK SCORE®

WALK SCORE	99
TRANSIT SCORE	100
BIKE SCORE	85



433 S Dearborn St.



RETAIL SPACE
GLA = 1,284 SF

433 S Dearborn St.





Leasing Contact

CHELSEA HENDERSON

CHENDERSON@METROCRE.COM

847.337.5287



WWW.METROCRE.COM